



34TH MEN

25TH LADIES

WORLD CHAMPIONSHIP OF SHORE ANGLING

INVITATION

SOUTH AFRICA





Message from the Executive Mayor
2017 World Shore Angling Championships

I am honored as the Executive Mayor of Saldanha Bay Municipality, to welcome the world to the jewel of the West Coast, Langebaan for the World Shore Angling Championships between the 04th-11th November 2017.

The West Coast- and all of South Africa- can be extremely proud of the great success of the World Shore Angling Championships and even more so that we are hosting it. Thank you to the World Body of Shore Angling(FIPS-M), to the organisers, the officials, the team of leaders, sponsors and especially to the anglers from all over the world for choosing our beautiful town and placing us on display for all to see.

Here in the West Coast we take pride in our fishing communities and heritage that we have built over many generations. We harvest from the sea with blood, sweat and tears but in the end we value the provision it brings to our tables.

I also invite you to come and enjoy our tourist attractions ranging from kite surfing, game drives, prestige restaurants, kayaking and arts&crafts.

I trust that the hospitality, cultural experience, food and scenery that comes with the championships will make it a lasting memory.

Thank you for participating in friendship and harmony.

West Coast greetings,

Marius Koen

Executive Mayor, Saldanha Bay Municipality





*Welcome by the President of the
South African Sport Angling and Casting Confederation.*

Dear Angling friends

It is a big pleasure to welcome you all to the southern tip of Africa, to our beloved country, South Africa. The Western Cape province is arguably the most beautiful part of our country and the village of Langebaan will be a worthy host to the World Championships that will take place from the 4th to the 11th of November 2017.

On behalf of SASACC, the controlling body of angling in South Africa, we thank CIPS and FIPS-M for having awarded these Championships to South Africa and we wish to make you proud in hosting the event.

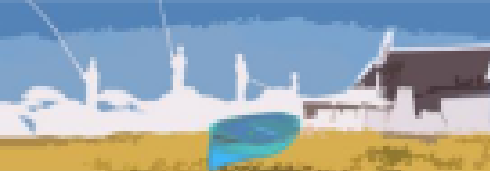
With the eye on the hosting of the 2019 World Games of fishing, this event will go far to market our country and to provide a further basis for us to showcase our ability to host events of this nature. I would like to thank SASAA and its officials for hosting the event.

Finally, I wish all the participants and officials a warm welcome and hope that the catches meet up with the expectations. May the best team win!

Yours in angling

Michael A Graskie – SASACC President





*Welcome by the President of the
South African Shore Angling Association*

Dear angling friends,

It is with great pleasure that we invite, on behalf of the South African Shore Angling Association, your national Federation / Association to participate in the :

34th World Sea Shore Angling Championship Men and 25th World Sea Shore Angling Championship Ladies to take place in Langebaan, South Africa, 4th – 11th November 2017.

We are honoured that C.I.P.S. and FIPS-M have granted South Africa, and the village of Langebaan the opportunity and trust to host the world's best sport sea anglers. We glad fully accept the challenge to present the most memorable tournament your Federation / Association will have ever experienced as our angling is the best in the world.

South Africa is the Rainbow nation of the world due to our various cultures and we invite you to share our hospitality and natural beauty.

May these championships take place in the true sporting competitive spirit, sporting cooperation and friendship among our sportsmen, federations and people's.

We trust except for angling everyone will benefit and gain lifelong friendships.

WELCOME!

Pierre du Preez – SASAA President





WELCOME TO LANGEBAAN

Although Langebaan is well known as a coastal resort, it is on the shores of a lagoon which flows from the sea. - one of South Africa's greatest natural wonders. The bright blue, sheltered stretch of water stretches south for 17 km from Saldanha Bay in the north, past Langebaan village to Geelbek at the southern end. It is 4 km wide in places. Langebaan village is in the heart of the West Coast region, 140 km from Cape Town. Langebaan is especially valued for its peaceful and beautiful surroundings. It is a favorite destination all the year round for visitors and water sports enthusiasts, who enjoy the fine angling, diving, swimming and sailing to be found here.

This picturesque town developed quickly from a quiet fishing village into a holidaymaker's paradise and today it is one of the most popular holiday resorts on the West Coast.

As the flowers from Postberg, through the West Coast National Park and all over the West Coast, form a tapestry of color and shape, so have the different people and nationalities formed a colorful tapestry. Churchaven, on the opposite side of the lagoon, is a wonderful example of where the past, present and future have merged into an atmosphere of timelessness.

The town originated on a farm called De Stompe Hoek that was first called Geytenbergfontein. Langebaan is one of the oldest towns in South Africa with a history dating back more than 400 years. It has an archaeological history of a few million years. Twelve kilometers east of the farm Elandsfontein, a fossilized skeleton was found that dates back to the Stone Age. This fossil deposit is considered to be one of the richest in the world.

Seal hunters from France frequented the area long before the time of Jan van Riebeeck. They used Schaapen Island as their headquarters and for storage of Seal skins and whale oil. This island which is close to the beach was called: "Isle à la Biche" at the time and the name was only changed back to the original about a century ago.

Schaapen Island was also used as a stopover to do repairs to ships. It was also used as a place of grazing for sheep that were then returned to Cape Town by the VOC.

Leentjies klip, where we find a caravan park today, got its name from a Mr. Lynch, who absconded from his ship in the area. "Lynch se klip" soon became known as "Leentiesklip", a name still used today.

For more information:

www.langebaaninfo.co.za/

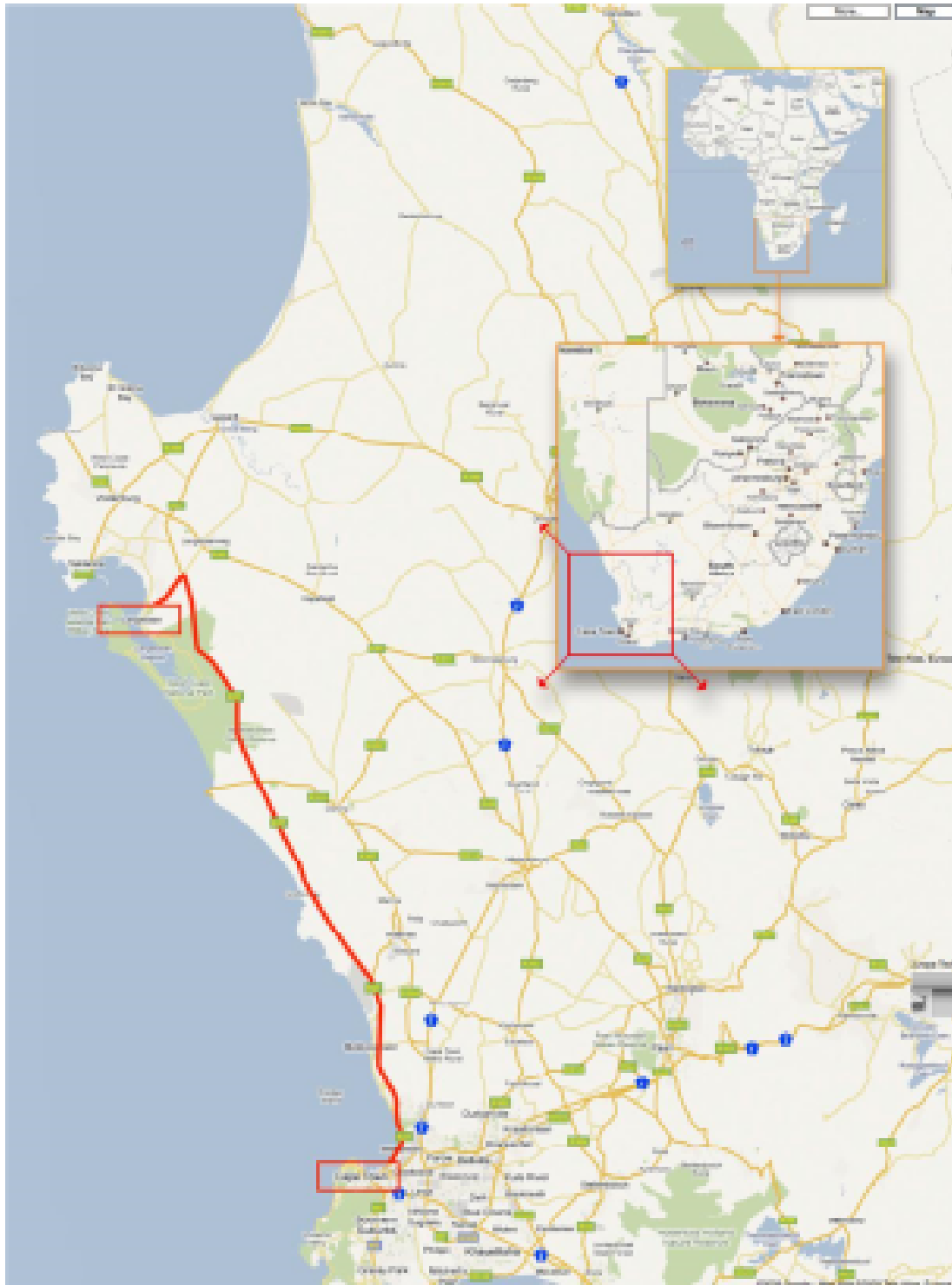
www.sasaa.co.za

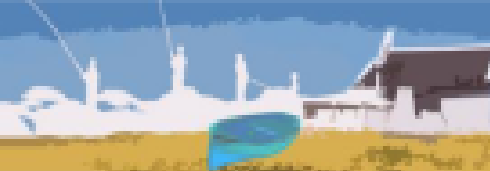
www.clubmykonos.co.za

www.southafrica.net



WHERE IS SOUTH AFRICA AND LANGEBAAN?





2017 SHORE ANGLING WORLD CHAMPIONSHIP PROGRAMME

NOTE: Venue for dinners, breakfasts, lunches and all functions will be communicated well in advance.

Important Notice: All team participants, managers and captains must report to the Information Office on arrival.

Saturday, 4th November

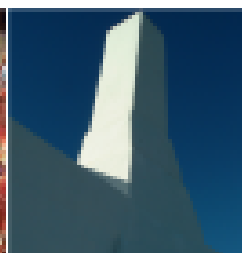
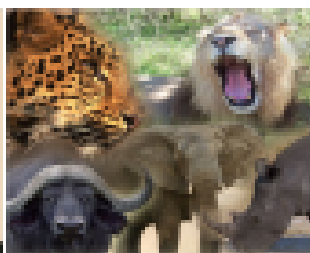
18.00h - Western Cape / Langebaan Tourism operators to meet interested tourists.
18.00h - Final arrival of participants, accommodation at Langebaan Golf Estate.
www.langebaanestate.co.za or elsewhere in Langebaan.
19.00h - 21.00h Dinner

Sunday, 5th November

09.00h – 09.30h Meeting between the Directorate and **Men** team captains
Drawing of fishing sectors for all days of competition
09.30h – 10.00h Meeting between the Directorate and **Ladies** team captains
Drawing of fishing sectors for all days of competition
10.30h Buses depart for “Brunch” at Klipzaam
12.30h Buses depart to accommodation
14.30h Buses depart for Street parade. Preparations for the official opening ceremony
15.30h Silver Falcons Fly over
15.35h - 15.55h Street parade
16.00h Buses depart to opening venue Club Mykonos

OPENING CEREMONY

- ▶ National anthems and hoisting of national flags
- ▶ Teams and Guests ushered to tables
- ▶ Addresses by Minister of Western Cape Sport, Mayor of Langebaan and President of South African Shore Angling Association
- ▶ Official opening by FIPS-M Official
- ▶ Dinner starter / hor dourves
- ▶ Dinner



2017 SHORE ANGLING WORLD SHORE CHAMPIONSHIPS



PRACTICE DAY - Monday, 6th November

06.00h	Breakfast. Lunch packs collected at breakfast
07.30h	Roll call – Bait issue at Bus parking area
10.00h	Start of OFFICIAL TRAINING
14.00h	End of Training. Buses return to accommodation
16.00h	Conversion of fish measurement to weight Captains meeting if required
19.00h - 21.00h	Dinner Announcement of results of official training to team captains

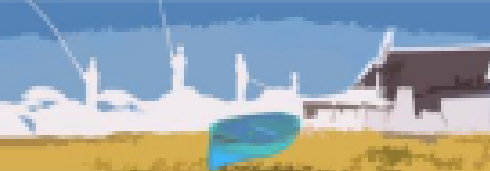
DAY 1 - Tuesday, 7th November

06.00h	Breakfast. Lunch packs collected at breakfast
07.30h-	Roll call – Bait issue at Bus parking area
10.00h -	Start of Competition Day 1
14.00h -	End of match. Buses return to accommodation
16.00h -	Conversion of fish measurement to weight Captains meeting If required
19.00h - 21.00h	Dinner Announcement of Day 1 results to team captains

DAY 2 - Wednesday, 8th November

07.00h	Breakfast. Lunch packs collected at breakfast
08.30h -	Roll call – Bait issue at Bus parking area
11.00h -	Start of Competition Day 2
15.00h -	End of match. Buses return to accommodation
17.00h -	Conversion of fish measurement to weight Captains meeting If required
19.00h - 21.00h	Dinner Announcement of Day 2 results to team captains

2017 SHORE ANGLING WORLD SHORE CHAMPIONSHIPS



DAY 3 - Thursday, 9th November

07.00h	Breakfast. Lunch packs collected at breakfast
08.30h -	Roll call – Bait issue at Bus parking area
11.00h -	Start of Competition Day 3
15.00h -	End of match. Buses return to accommodation
17.00h -	Conversion of fish measurement to weight Captains meeting If required
19.00h - 21.00h	Dinner Announcement of Day 3 results to team captains

DAY 4 - Friday 10th November

05.30h - 06.30h	Breakfast. Lunch packs collected at breakfast
06.45h -	Roll call – Bait issue at Bus parking area
09.00h -	Start of Competition Day 4
13.00h -	End of match. Buses return to accommodation
15.00h -	Conversion of fish measurement to weight

CLOSING CEREMONY

18.40h -	Buses depart for GALA DINNER
19.00h -	Teams and Guests ushered to tables
19.00h - 21.00h	Proclamation of winners and presentation of awards Dinner

Saturday 11th November

07.30h -	Breakfast Departure of participants
----------	--

You will be informed well in advance if this proposed programme changes



LANGEBAAN COUNTRY ESTATE RULES

Here are a few 'housekeeping' matters we would like to bring to your attention;

1. A Lodge or Suite must be vacated (keys handed in at Reception) before 10h00 on the day of departure.
2. Parking is at own risk.
3. All bar and restaurant facilities at the Clubhouse are cash or credit card only.

To help you relax and enjoy your time at Langebaan Country Estate and for future reference we have listed some of the facilities available to you. We hope that you will enjoy your stay with us. If we can do anything to make your stay more enjoyable, or should you need anything, please do not hesitate to contact the team at Langebaan Country Estate.

General Estate Rules:

1. Guests and visitors are not permitted to bring any pets onto the estate and are required to sign the relevant entry document stating that they will abide by the House Rules, Regulations, any Disclaimers and the Constitution. No vehicles shall enter or leave at any point except at the entrance gates, and shall only be driven on the brick paved estate roads, at a speed not in excess of 30km per hour and at a speed of 15km per hour in Ellefsen.
2. The Estate is an environmentally sensitive area and no person may enter natural fynbos areas, or do anything that detrimentally affects the flora and fauna, or any of the amenities. No unauthorized persons may enter any storage dams.
3. Only members, guests and visitors who have paid and signed in to play golf are permitted on the golf course, and play starts and ends at the Clubhouse.
4. Building construction sites are at all times out of bounds to unauthorized persons, and construction staff must be transported to and from site.
5. No bait permitted on Estate

House Rules:

1. The Lodge or Golf Suite is to be used for accommodation only for the number of persons specified in your reservation.
2. It is not permitted to hang washing or towels over balconies or out of windows, or to drape it over garden furniture.
3. Please keep fellow residents in mind regarding the volume of the radio and TV; do not create excessive or unnecessary noise.
4. No smoking is allowed in the Lodge or Golf Suite, and we would appreciate your thoughtful disposal of cigarette litter outside the accommodation.
5. Please do not litter.
6. Please park cars in the allocated garage or parking bay per unit. There are extra parking bays available for extra cars. Do not park on the plants or grass.
7. Please adhere to the speed limits on the estate.
8. No pets are allowed.
9. Limited DSTV channels available in addition to local stations.
10. Please refrain from walking on the golf course, use the road provided to the clubhouse. This is for your own safety.



GENERAL INFORMATION

A. ORGANISATION

The Organizer of the Championships is the South African Shore Angling Association.

Tournament Director and contact person:

Frans Claassen, address: PO Box 1320, Gansbaai, 7220, South Africa
Tel: 0027 28 384 1333; Fax: 0027 28 384 1333; Mobile: 0027 83 546 7474

E-mail: sasaasec@telkomsa.net

Web: www.sasaa.co.za

B. APPROACHES TO THE ORGANIZING PLACE LANGEBAAN

1. By Road:

Drive on R27 road from Cape Town towards Veldrif.
Turn left onto the Oosterwal road into Langebaan.
Co-ordinates are: 33°6'14.96"S: 18°1'56.88"E

Website to visit: www.streetmaps.co.za

2. By Air:

LIST OF THE MAJOR AIRLINES THAT SERVE CAPE TOWN INTERNATIONAL AIRPORT.

Air Mauritius

Lufthansa

Air Namibia

Malaysia Airlines

British Airways

SAA

Delta Airways

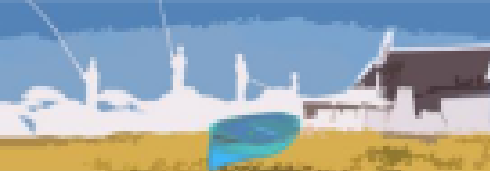
Singapore Airlines

Kenya Airways

Virgin Atlantic

KLM

Emirates



Cape Town Airport is situated on the Eastern outskirts of the city and 140km's from Langebaan.

From the USA the only direct flights to South Africa are with South African Airways and Delta Airlines. They fly from New York (JFK) and Atlanta to Johannesburg and Cape Town. Alternatively, there is the choice to fly via a European capital, with one of the European airlines shown in the list above. From Europe there are a wide variety of flights, most of them direct and non-stop to either Johannesburg or Cape Town. The above list also shows a number of airlines that offer direct flights from Australia and the Far East.

Airfares, Booking and Tickets...

There are a myriad of booking agents to be found, each one offering you the lowest air fares and best packages. Our experience has been that often the lowest fare was to be found direct from the airline themselves.

General Flight times to South Africa...

On direct international air routes flights from Europe are generally overnight. From the USA there is usually one stop over, but some flights offer multiple stopovers. Below is a fair idea of the duration of flights from a number of major international gateways to South Africa with the relevant flight times.

LONDON 11 hr 00 min

NAIROBI 04 hr 20 min

AMSTERDAM 11 hr 00 min

HONG KONG 13 hr 15 min

FRANKFURT 10 hr 30 min

PARIS 10 hr 30 min

ZURICH 10 hr 15 min

ATHENS 09 hr 30 min

LISSABON 09 hr 30 min

TEL AVIV 09 hr 10 min

SAU PAULO 11 hr 00 min

DUBAI 08 hr 20 min

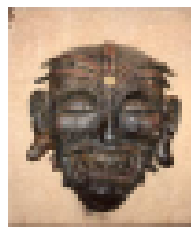
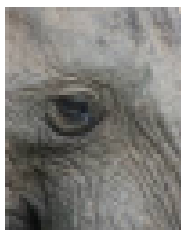
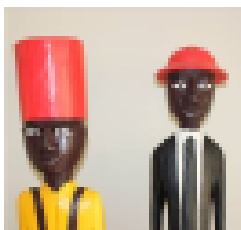
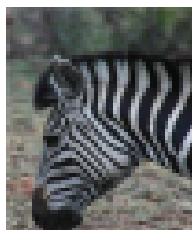
RIO DE JANEIRO 09 hr 15 min

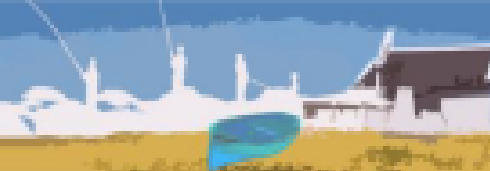
NEW YORK 15 hr 20 min

ATLANTA (1 stop) 17 hr 45 min

MIAMI 16 hr 00 min

3. By sea & Railway: Not recommended
4. Transport / Shuttle from Cape Town Airport to Langebaan will be arranged by the organizer.





C. INSURANCE

The Organizer undertakes to have Public Liability in place.

D. MEDICAL CERTIFICATES AND MEDICAL STAFF

1. Each national organization is accountable for the data entered / supplied for their team and shall provide that all the members of the team produce a medical certificate as a proof of their fitness to take part in the competition
2. A medical certificate for the team will be accepted provided it is stamped by a competent doctor and is written in one of the official languages of C.I.P.S.
3. The Organizer will have medical competent staff available for the duration of the competition
4. Should a national organization fail to comply with 1 and/or 2 above, the Organizer will commission a medical doctor to issue the medical / fitness certificates, at the expense of the competitor(s) or their national organization.

E. ANTI-DOPING CONTROL

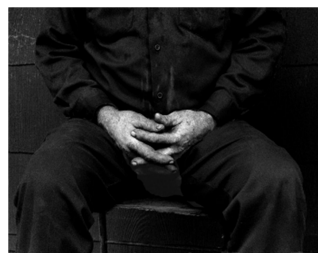
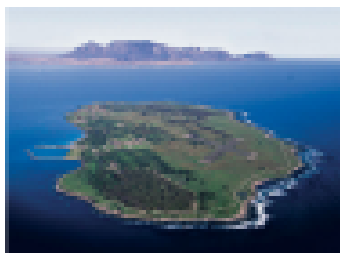
All the participants / competitors partaking in the championships implicitly include the acceptance of ALL the sports anti-doping rules of WADA.

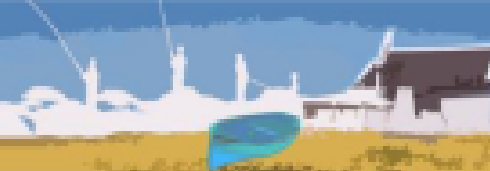
F. VISAS

Visas are required for visitors. Contact your nearest South African consular representative.

G. STATE FLAG AND ANTHEM

National organizations are responsible for supplying the Organizer with at least one (preferably two) flag of their country, of the prescribed size, as well as a CD with their national anthem in MP3 format or on a memory stick.





H. MEDALS AND OTHER RECOGNITIONS

The winners will be awarded medals - gold silver and bronze - by FIPS-M, while the Organiser will offer cups and other commemorative awards.

I. MEANS OF PAYMENT (CURRENCY)

The currency in use is ZAR, (Zuid Afrika Rand, South African Rand) but payments could be made in other valid convertible currencies (through exchange in banks or exchange offices for Euro), or by American Express, Master, Diners or Visa cards.

www.x-rates.com/d/ZAR/table.html

J. PARTICIPATION

1. PARTICIPATING FEE PER TEAM

▶	5 competitors	x 725 €	3 625-00 €
▶	1 manager	x 625 €	625-00 €

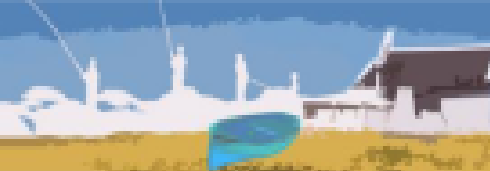
TEAM COST **4 250-00 €**

INCLUDED IN THE PARTICIPATION FEE

- hotel / house accommodation in double rooms, full board (breakfast, lunch, dinner) starting with dinner on Saturday, 4th November, concluding with breakfast on Saturday, 11th November
- transport to / from the competition sites
- cocktail at the opening ceremony
- cultural / entertainment programme
- gala dinner / closing ceremony (banquet)
- baits for competition and official practice
- FIPS/M starting fee and CIPS organizing fees

Note: Cost for additional bait for own practice days will be available at:

Pilchards	3.50 € /kg
Chokka / Squid / Calamari	12.50 € /kg
Mullet	7.0. € /10 each



2. CAPTAIN / NATIONAL OFFICIAL / TEAM LEADER

Individual fee per member 625-00 €

The fee per individual member includes all listed from a, b, c, d & e above.

3. OTHER PERSONS

(Family, friends, etc.) 625-00 €

The fee per individual family / friend includes:

- a. hotel / house accommodation in double rooms, full board (breakfast, lunch, dinner) starting with dinner on Saturday, 4th November, concluding with breakfast on Saturday, 11th November
- b. transport to / from the competition sites
- c. cocktail at the opening ceremony
- d. Cultural entertainment program
- e. Ceremony (Banquet)

4. SASAA BANK DETAILS:

SOUTH AFRICAN SHORE ANGLING ASSOCIATION
FIRST NATIONAL BANK
NEWTON PARK
BRANCH CODE: 261050
ACCOUNT No. 534 100 361 57
FNB SWIFT No. (FIRNZAJJ)

BANK CHARGES WILL BE FOR THE ACCOUNT OF PARTICIPATING NATION!!!

5. BAITS

The following types bait will be supplied per day:

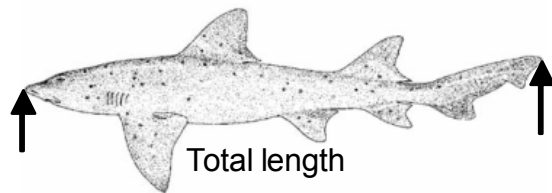
- ▶ Mullet 10 number
- ▶ Sardine 1 kg
- ▶ Chokka / Squid / Calamari 500 gram



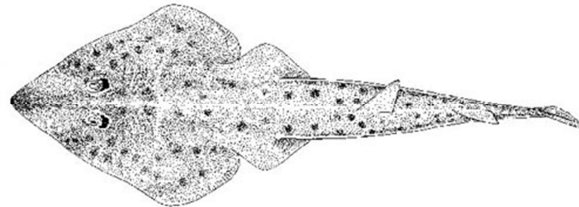
6. **FISH SPECIE**

Many species of fish are caught in the area but the predominant species are:

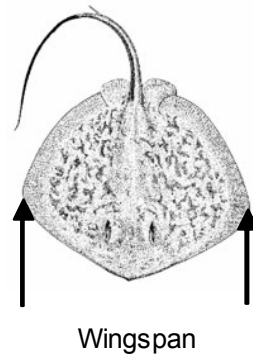
Smooth Hound



Guitar Fish

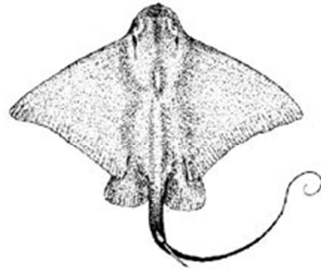


Blue Ray

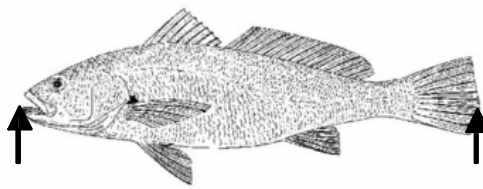




Eagle Ray

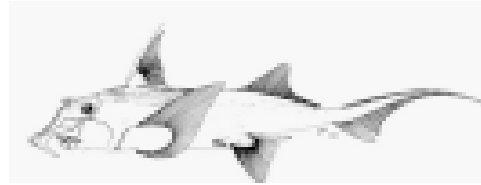


Cob

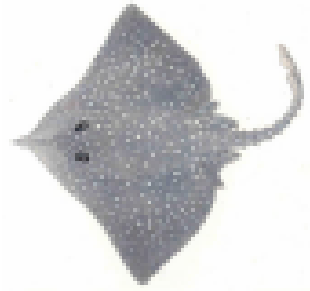


Total length

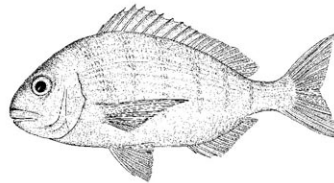
St Josephs



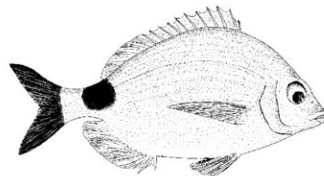
Spear Nose Skates



White Stump Nose



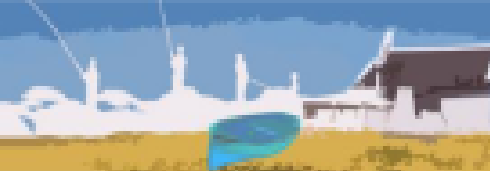
Blacktail





Dogfish (Striped)	<i>Poroderma africanum</i>
Gully (Spotted)	<i>Triakis megalopterus</i>
Hound (Smooth)	<i>Mustelus mustelus</i>
Blueray	<i>Dasyatis chrysonota</i>
Duckbill ray	<i>Pteromylaeus bovinus</i>
Eagle ray	<i>Myliobatis aquila</i>
Electric (marbled)	<i>Torpedo sinuspersici</i>
Guitarfish (Lesser)	<i>Rhinobatos annulatus</i>
Spearnose	<i>Raja alba</i>
Stingray (Short-tail)	<i>Dasyastis brevicaudata</i>
Blacktail	<i>Diplodus sargus capensis</i>
Hottentot	<i>Pachymetopon blochii</i>
Kob (Dusky)	<i>Argyrosomus sp.</i>
Leervis	<i>Lichia amia</i>
Mullet (Striped)	<i>Liza tricuspidens</i>
Steenbras (Wescoast)	<i>Lithognathus aureti</i>
Stumpnose (White)	<i>Rhabdosargus globiceps</i>

- 6.1 Minimum size of **15cm** as per FIPS/M rules
- 6.2 Shad and Galjoen are out of season and will not score points.
- 6.3 Only stewards / marshals will be permitted to remove hooks from fish with poisonous spikes.
- 6.4 The fish will be measured by a steward for the classification. The length and Species of the fish will be recorded on the competitors match card, a weight For length conversion system will be used by the organisation. A copy of the Conversion table will be supplied to each captain at the first meeting.
- 6.5 **FIPS-M rules are strictly applied and can be downloaded from:**
<http://www.fips-m.org/statutes-rules-gb>



7. FISHING TACKLE SHOP

There are three (3) fully equipped tackle shops in Langebaan or within 20 km. The Organizers will ensure the shops have appropriate tackle in stock.

SPECIAL ARRANGMENTS

Should a team wish to arrive earlier for training/practice or to stay after the official competition the Organizer will provide at the following rates.

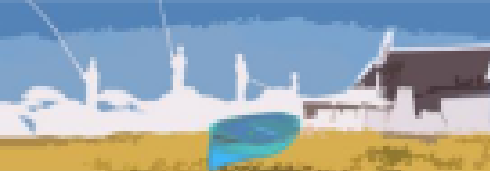
Daily (full board), per person sharing per day	60-00 €
Daily (full board), per person not sharing per day	75-00 €

8. PAYMENTS

Each federation shall make payments

- ▶ Within **8 (eight) days** following the submission of FINAL APPLICATION, in line with the payment instructions supplied.





10. EXPRESSION OF INTEREST

Nations who are considering participating in this Championship are requested to complete this form and e-mail or fax to the number or address below:

You are under no obligation.

Please complete and reply by 15 May2017

EXPRESSION OF INTEREST

NATION	MEN	LADIES	NAME	SURNAME	E-MAIL	PHONE No,
SOUTH AFRICA	YES	YES	FRANS	CLAASSEN	sasaasec@telkom sa.net	+27 83 546 7474

FAX to: 0027 28 384 1333
E-mail to: sasaasec@telkom sa.net



REGISTRATION FORM / ANMELDEFORMULAR

RETURN BEFORE **01/07/2017**

34th MEN'S WORLD CHAMPIONSHIP SHORE ANGLING

REGISTRATION FORM FOR OFFICIAL REGISTRATION

NATION: _____

E-mail _____

Tel: _____

	Competitors, Name & Surname
Competitor	
Competitor	
Competitor	
Competitor	
Competitor	

Official Registration per COMPETITOR
(all inclusive) 725€ x competitors
Exrea days _____ x _____ competitors x 60€

Fax No.
Email

0027 28 384 1333
secretariat@italianmsa.net

2017 SHORE ANGLING WORLD SHORE CHAMPIONSHIPS



RETURN BEFORE 01/07/2017

34th MEN'S WORLD CHAMPIONSHIP SHORE ANGLING

REGISTRATION FORM FOR OFFICIAL REGISTRATION

NATION: _____

E-mail _____

Tel: _____

Registration	Name & Surname	Observaciones
Captain		
Reserve		
Manager		
Accompanying		
Accompanying		
Accompanying		
Accompanying		
Accompanying		

Registration for Captain, Manager, Reserve, Accompanying, full board 625€ X _____

Extra days _____ x _____ persons x 60€

Fax No.
Email

0027 28 384 1333
sasaasec@telkomsa.net



RETURN BEFORE 01/07/2017

25th LADIES WORLD CHAMPIONSHIP SHORE ANGLING

REGISTRATION FORM FOR OFFICIAL REGISTRATION

NATION: _____

E-mail _____

Tel: _____

Competitors, Name & Surname	
Competitor	
Competitor	
Competitor	
Competitor	
Competitor	

Official Registration per COMPETITOR
(all inclusive) 725€ x competitors
Extra days _____ x _____ competitors x 60€

Fax No.
Email

0027 28 384 1333
sasaasec@telkomsa.net



RETURN BEFORE 01/07/2017

25th LADIES WORLD CHAMPIONSHIP SHORE ANGLING

REGISTRATION FORM FOR OFFICIAL REGISTRATION

NATION: _____

E-mail _____

Tel: _____

Registration	Name & Surname	Observaciones
Captain		
Reserve		
Manager		
Accompanying		
Accompanying		
Accompanying		
Accompanying		
Accompanying		

Registration for Captain, Manager, Reserve, Accompanying, full board 625€ X _____

Extra days _____ x _____ persons x 60€

Fax No.
Email

0027 28 384 1333
sasaasec@telkomsa.net



TEAM : _____

TRAVEL PLAN

NAMES	ARRIVE : CAPE TOWN					DEPART FROM CAPE TOWN		
	FLIGHT No	DATE	TIME	DO YOU NEED TRANSPORT TO LANGEBAAN		FLIGHT No	DATE	TIME
				YES	NO			
1								
2								
3								
4								
5								
6								
7								
8								
9								
10								
11								
12								
13								
14								
15								

FAX to: 0027 28 384 1333

E-mail to: sasaasec@telkomsa.net



TOURNAMENT ANGLING ON THE WEST COAST

Introduction

Tournament angling on the West Coast is different, VERY different! It is simply like no other area in South Africa. The water is shallow, VERY shallow, usually less than a meter deep. REALLY flat, there is simply no swell.

Because of the cold Benguela current the water is normally very cold except in the protected bays such as St Helena Bay and Saldanha Bay where the sun warms the water, as it is so shallow in the case of St Helena bay and because of the Langebaan lagoon in the case of the Saldanha Bay area. The result is that all the angling is done in these two bays. In both these bays the water can be as warm as 24° C and so most of the fish are concentrated there.

Blue Water Bay to Saldanha Bay

This area is exceptionally shallow and normally crystal clear, however don't let that put you off as the Lesser Guitar fish and bull rays still feed even in the clear water. You can actually stalk them and cast a bait at them.

Bergriver Mouth to Dwarskersbos and Varkenvlei

The road to Dwarskersbos runs parallel to the coast, making it very accessible by any vehicle. The first entry point is at *the beacon*. From this point it is possible to follow the coast all the way to the *swartbossie*, a distance of two to three kilometers. Because of the track being a 4x4 track it is fished less often than the rest of the area, but often produces good fish, especially bull rays.

The most popular area fished is from the swartbossie to the *Lapa*. This area is heavily fished by local anglers, fishing for cob and galjoen, [every year a few giant cob are caught by anglers fishing for galjoen with white mussel] For the competitive angler this can be the most productive area and has been known to produce great numbers of fish.

The Lapa the fish are generally taken on a long cast and because of this it usually fishes better on a low tide. Again this area has quite a lot of reef and it is important to know where they are as again the fish seem to swim along these rocky areas.

From the *Lapa to Dwarskersbos* there are numerous reefs, which open on the low tide. This whole area [+/- 3kms] is a good area for all the flat fish, especially blue rays.

The water along this area is normally brown and flat and because of this the predominant bait is sardine and mullet



Langebaan

This is the area that produces the most Smooth hound fish. It also produces Lesser Guitar fish [most of the Lesser Guitar fish are the round nose specie which grow slightly larger than the standard Lesser Guitar Fish], Bull Rays and the odd Kob is also caught.

In Langebaan first important spot is the *Spit in Langebaan*, which is a prime spot for catching smooth hounds. It fishes best from two hours before low tide till two hours after low tide, as this is when the current is slack.

Because of the fish being targeted, squid is very important bait in this area. The smooth hounds here seem to prefer squid above any other bait. Mullet are the second most important bait, especially a slightly larger mullet so that a reasonable bait can be made of the head. Sardine is important for Lesser Guitar Fish bait. The bait allocation for this area will be Squid, mullet and sardine.

APPROPRIATE TACKLE

Because of the size of the fish being targeted an angler will need two sets of rods and reels. When fishing for Smooth hounds an appropriate rod would be 4m and a 6 to 8 ounce tip. When fishing for the smaller flat fish a 3.5m and a 4 to 6 ounce tip would be better. The problem of two rods can be overcome by having one rod with two different tips.

The reels that are mostly used are the Shimano or Daiwa 20 or 30. It would be appropriate to have a reel filled with a good quality nylon with a diameter of 0.50mm and one with 0.45 mm. for shock leaders a range from 0.65 to 1.00mm would be suggested.

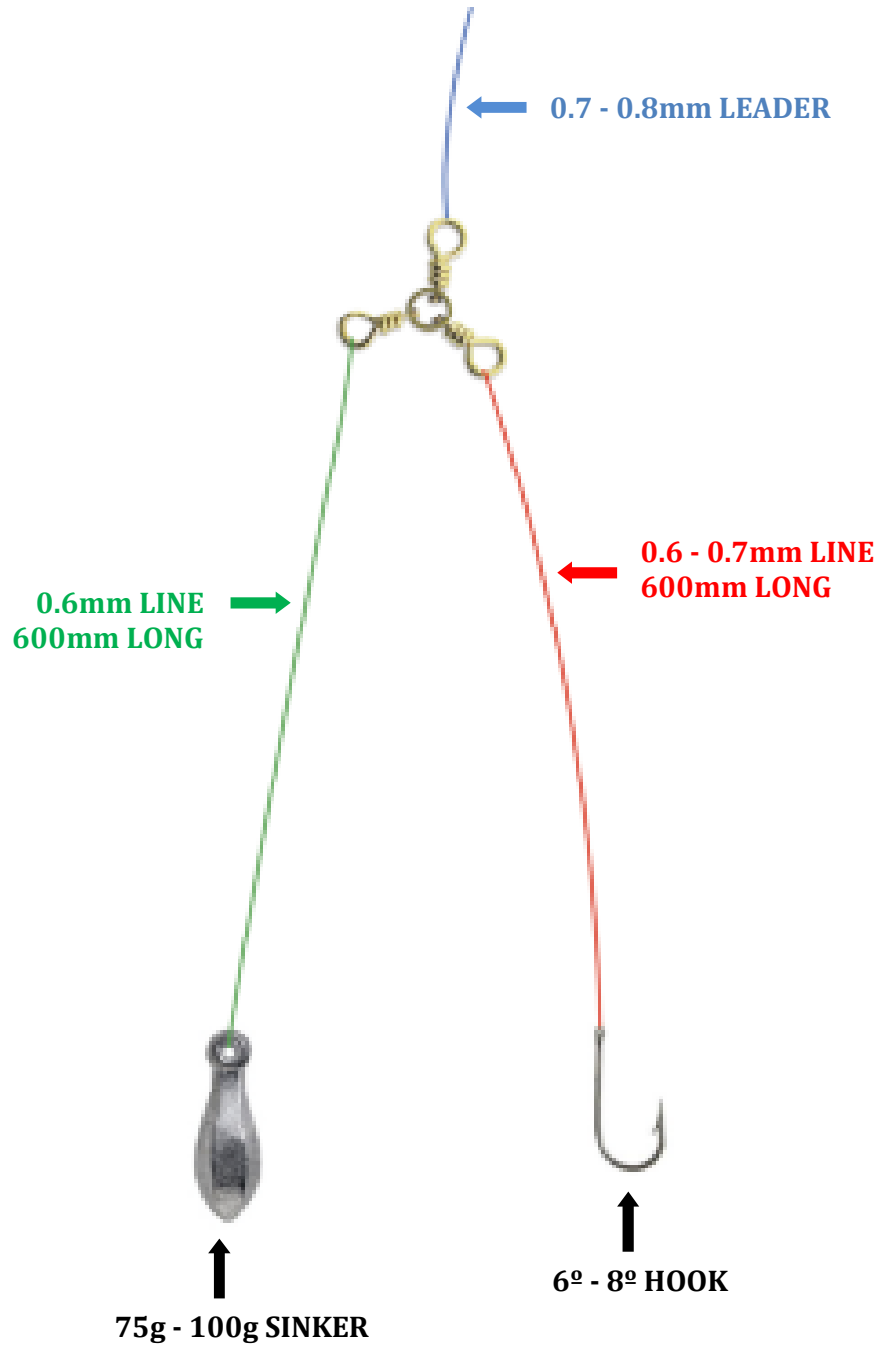
For terminal tackle sinkers should range from simple teardrop sinkers 75gr to 175gr. When there is current in the Langebaan area the breakaway with wires in them will be needed. Here only heavy sinkers would be needed 150 to 175grs. The hook range would be from 3/0 to 6/0 for the lighter fishing, while 7^o to 10^o will be needed for the heavier fishing.

It would not be advisable to use more than two hooks at any one time as the fish are of such a size that they may break each other off even when fishing with two hooks this happens.



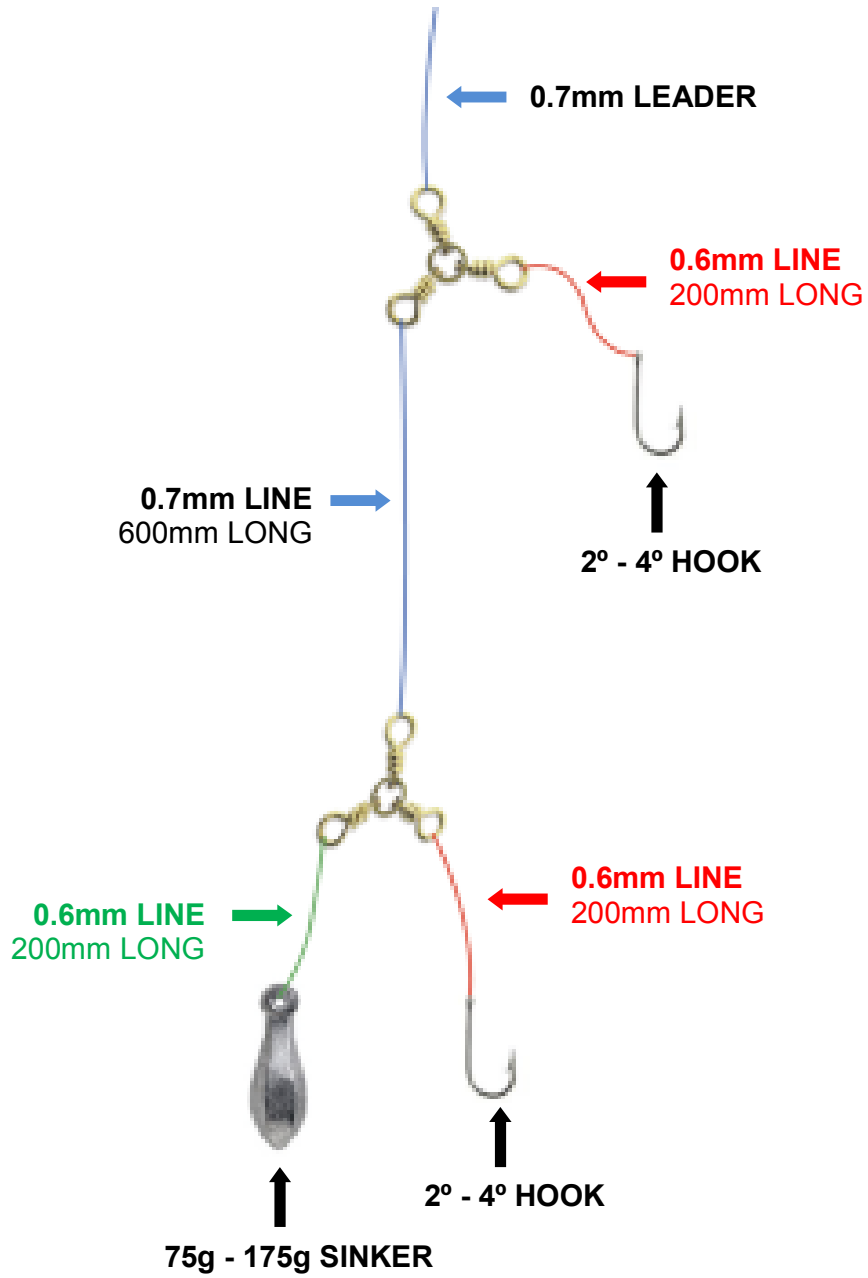
TRADITIONAL SETTING / TRACE USED

TRACE 1





TRACE 2





TRACE 3





CONSERVATION

South African angling is **VERY** conservation conscious and will **insist** that all fish be returned to the water as soon as possible with as little trauma as possible. We also allow no gaffing of fish as all the fish here can easily be landed without being gaffed. The use of circle hooks is highly recommended but if a hook is swallowed by a fish the trace must immediately be cut. We also insist that no rays be turned on their backs when removing hooks as this can cause them permanent damage.

WARNING

Some of our fish have spikes and can cause ugly wounds. The most dangerous are the barbel as their spikes have venom which can cause extreme pain. The blue rays and the duckbill rays have a spike on their tail which can also cause ugly wounds. The St Josephs have a spike on their backs which should be handled with caution.

In **Conclusion** the West Coast looks forward to welcoming all competitive anglers to our waters, may you all enjoy your stay and come back again as this is probably the last frontier of angling in South Africa.

BAITS

THE BELLY OF A SARDINE FISHING'S OTHER BIG GAME ANCHORS

1. The belly part is cut out with a sharp knife.
2. Make a slit on both sides of the backbone and remove it. The bait is now hooked, leaving the point of the hook protruding from the slit side. Finally the bait is neatly secured with this cotton.



Remarks:
This is a very effective bait, as the strong flavour in the stomach is not lost in the water to attract fish quickly. Furthermore, the white belly ("fisher") is very likely to draw the attention of predators.

SARDINE FILLETS
After having removed the head and tail of the sardine, cut out the two fillets on both sides of the backbone. Cut through the flesh of each fillet in the length, stopping before cutting through the skin. Hook the first fillet at its broad side so that the hook protrudes from the fish side, hold the bait along the length all around the hook shank and secure it. The second fillet is now placed on the first one and secured. Repeat the procedure of the sardine over the bait for extra flavour and you will end up with a most tempting bait for orange roughy, both blue and even white stonefish.



FILLETED SARDINE
The photo shows a sardine that has been filleted from the top of the back, like a canard. The hook, which has been rubber around the shank, is inserted at the skin side. The filleted sardine is now wrapped around the hook shank as shown and secured.



1. Cut a strip of shalika as indicated.
2. Thoroughly soften the part along the broken line.
3. Insert the hook at the slit and secure the softened part in the hook shank.

The completed slim bait can be used at the bottom of the cage.

Remarks: With this bait as a base, you can also try the following variations, which may pleasantly surprise you:




1. Add one or two sandprawns to the bait.
2. Slide a piece of bloodworm, which has been turned inside out, down your hook trace. Pull it over the bait (like a doorknob) and secure with this cotton thread. This juicy bloodworm, with the two shalika "legs" hanging free, is one of the most tempting baits to offer a white stonefish.

An angler showing one of many white stonefish caught on a slim shalika bait.





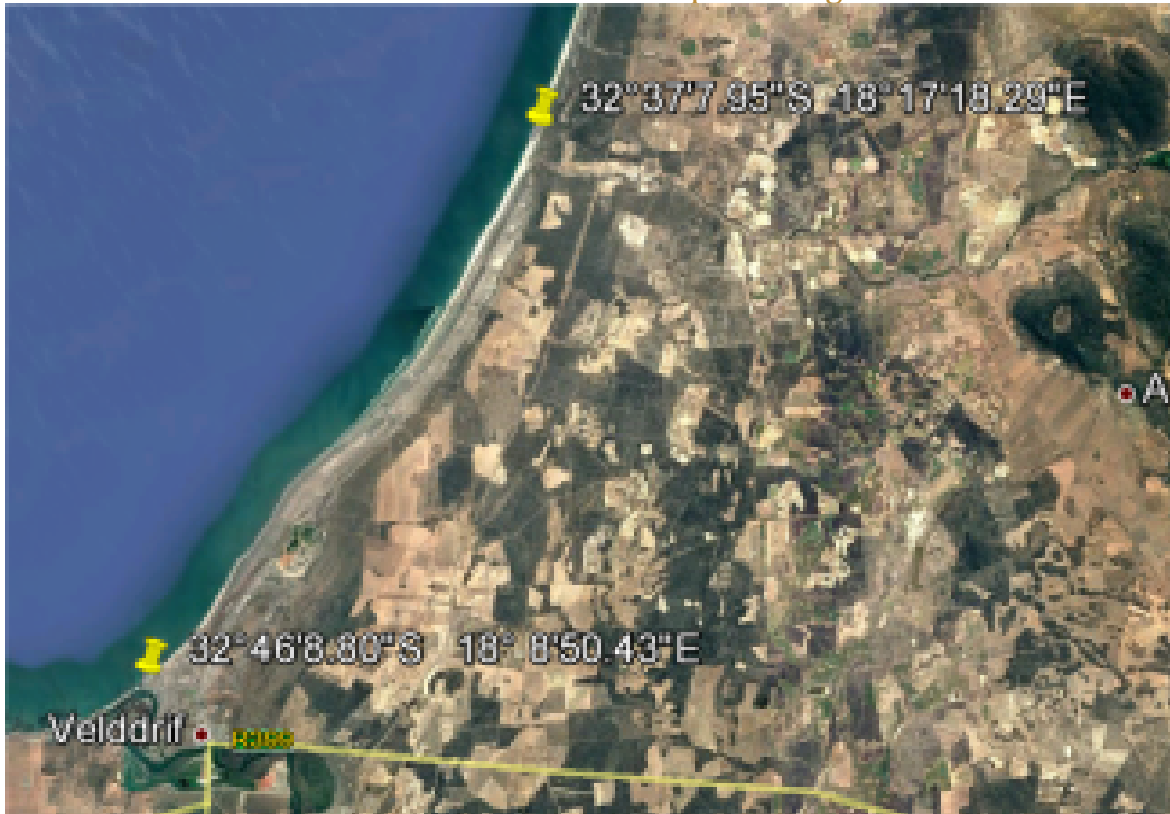
FISHING AREAS

Langebaan to Blue Water Bay to Saldanha Bay





Dwarskersbos North to Lapa to Bergriver mouth



Britannia Bay





IRONIXPRO

Affordable Sea Fishing Tackle for Passionate Anglers





ESQUIRE

Construction Solutions

Esquire: "A nobleman who, in training for knighthood sets an example to a Knightly servant King"

Pierre du Preez
072 177 5419
pdupreez.contracts@gmail.com

Professional Project Management
Earthworks
Sewer, Storm water and Water networks
Electrical, Data and Telecom Ducting networks
Road Construction
Paving and Channeling
Inlets
Landscaping, retaining

WESREM

Plant Hire (Pty) Ltd

"Excellence in Construction Services"

Pierre du Preez
072 177 5419
pdupreez.contracts@gmail.com

Justin Maas
082 562 8343
jmaas.office@gmail.com

Shanon Carolee
082 200 3002
scarolee.office@gmail.com





GREAT WHITE SHARK TOURS WITH BRIAN MCFARLANE
GREAT WHITE SHARK SURFACE VIEWING AND CAGE DIVING TRIPS

TEL: +27 (0)28 384 1418
CELL: +27 (0)83 300 2138
WWW.SHARKCAGEDIVING.NET





WARWICK
WEALTH

The Investment Specialists

0800 50 50 50 | warwickwealth.com
An Owner of Authorised Financial Services and Credit Providers

PLEASE TAKE NOTE
This document is for information purposes only and does not constitute or form part of any issue to offer or sell, or any solicitation or any offer to subscribe for or purchase any particular investment. It is recommended that investors obtain professional financial advice from a licensed financial adviser prior to investing. Warwick Wealth, or any of its subsidiary companies' directors, employees or officers shall not be responsible and disclaim any liability for any loss, expense and/or damages (direct, indirect, consequential and/or special) which may be suffered due to or be attributable, directly or indirectly, to the reliance of, or use of any information contained in this document. Collective investment schemes in securities are generally medium- to long-term investments. Collective investment schemes are traded at market prices and can engage in borrowing and short selling. The value of participatory interests in the investment may go down as well as up. Past performance is not necessarily a guide to future performance. A schedule of fees, charges and maximum commissions is available on request from the manager, or is available on the website at www.mato.co.za as the manager does not provide any guarantee, either with respect to the capital or the return of a portfolio. Foreign securities within portfolios may have additional material risks, depending on the specific risks affecting that country. Fluctuations in movements in exchange rates may cause the value of underlying international investments to go up or down. Investors are reminded that an investment in a currency other than their own may expose them to a foreign exchange risk. Warwick Invest (Pty) Ltd, Warwick Funds (Pty) Ltd and Warwick Private Clients (Pty) Ltd are Authorised Financial